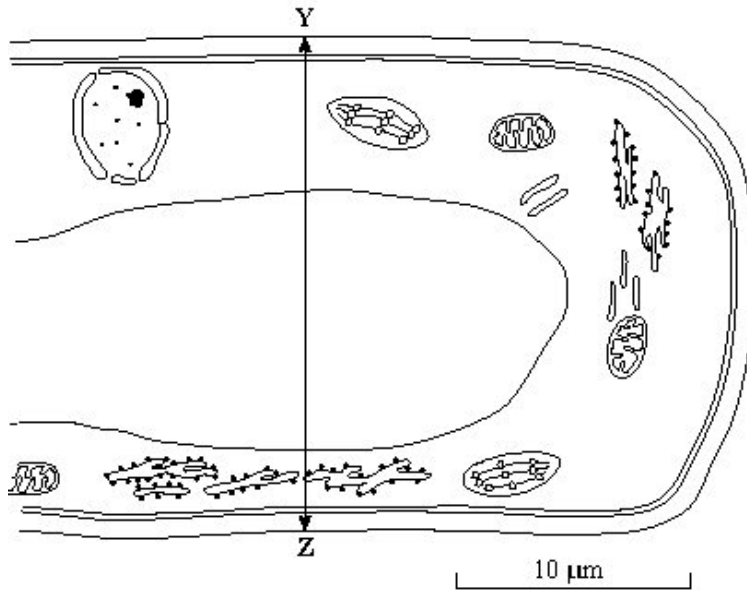


Q1. (a) Cells of multicellular organisms may undergo differentiation. What is meant by differentiation?

.....

(1)

(b) The drawing shows part of a plant cell as seen with an electron microscope.



(i) Give **two** features shown in the drawing which are evidence that this cell is eukaryotic.

1

.....

2

.....

(2)

(ii) Calculate the actual width of the cell from **Y** to **Z**. Give your answer in micrometres (μm) and show your working.

Answer μm

(2)

- (iii) Give **one** way in which a typical animal cell differs from the cell shown in the drawing.

.....

.....

(1)
(Total 6 marks)

